



Sheridan County Conservation District  
Fall 2017

# The Conservation Gazette



The mission of the Sheridan County Conservation District is to protect Sheridan County's water and land quality through assistance programs, education, monitoring and planning.

## Meet the Board and Staff

### District Staff

Carrie Rogaczewski  
District Manager  
Jackie A. Carbert  
Program Assistant

### NRCS

Andrew Cassidy  
District Conservationist  
Oakley Ingersoll  
Soil Conservationist

### Board of Supervisors

Susan Holmes  
Edith Heyward  
Orrin Connell  
Emerson Scott, III

### In This Issue

Project Funding  
Soil Health Workshop  
What's Next for Acme?  
2017 Tree Program  
Watershed Education  
K-12 Poster Contest  
Looking Ahead



## We want to help fund your land and water quality projects!



The SCCD provides cost-share assistance for livestock (relocating corrals, stockwater, grazing management) and septic system improvements along impaired streams in Sheridan County. Typical cost-share assistance for livestock improvements is between 50% and 80%, depending upon available funding. The SCCD offers up to 50% cost-share assistance for eligible septic system



## Would you like to improve soil health on your farm or ranch?

### Regenerating Landscapes Soil Health Workshop featuring Gabe Brown

Join us for this exciting soil health workshop on **November 10th**, from **12:30-5:30 pm**, at the **Whitney Center for the Arts at Sheridan College**.

Gabe will discuss soil function, principles of a healthy soil, resource concerns on grazing and cropland, and stacking enterprises, followed by a Q&A session.

Registration is required and includes a \$10 fee. Register online ([www.sccdwy.org](http://www.sccdwy.org)) or at the SCCD office. Payment can be made in advance to our office or at the door the day of event.

Sponsored By



Courtesy of Brown's Ranch



# What's Next for the Acme Power Plant Site?

In August, over 50 community members participated in a Community Visioning Session to provide input on potential future uses for the site of the Former Acme Power Plant. This event, hosted by the Sheridan County Conservation District, (SCCD) in partnership with the Sheridan Community Land Trust (SCLT), and The Nature Conservancy (TNC), was just one piece of a local effort to address environmental and safety concerns at the site. The session included a brief presentation about the history of the site and the partners' expectations for future use, which include ensuring public access, capturing the historical importance, and protecting water and land quality. While a lot of different ideas were presented, a common theme centered around recreational and educational opportunities. The summary report is available on the SCCD website ([www.sccdwy.org](http://www.sccdwy.org)). Currently, the SCCD, SCLT, and TNC are working with students from the Yale School of Forestry to develop a project website with information on the site's history, environmental assessments, and updates.

As part of this effort, SCCD assumed ownership of the 5+ acre site for the purpose of participating in federal and state remediation programs. Initial environmental assessments have been completed through the EPA Targeted Brownfields Assessment program. In the near future, SCCD will enroll in the Wyoming Department of Environmental Quality Voluntary Remediation Program (VRP), which is necessary for program eligibility and liability assurances.



This is an exciting project. While there are federal and state programs to address many of the remediation aspects, there are match requirements and other components that will need additional financial support. As such, SCCD is working to secure other sources of funding through private foundations and donations.

If you are interested in supporting this unique project or other SCCD programs, please see the membership program insert.

## 2017 Seedling Tree Program

The Sheridan County Conservation District's Seedling Tree Program makes conservation grade-seedling trees available for purchase at a nominal price. These low-cost seedling trees are available for purchase through the district from November through March. Delivery of the seedling trees is expected to be in early May 2018.

A wide variety of tree species is offered to meet conservation needs throughout Sheridan County. The trees are bundled in groups of 25 or 30, based on size and species selection. Seedling trees are offered as either "bareroot" or in "large tubes", also depending on the species. The district is once again offering the popular variety package. This package is a bundle of 25 trees, five each of Chokecherry, Buffaloberry, Red-Osier Dogwood, Native Plum and Rocky Mountain Juniper. The variety package is only available in limited quantities and sells out quickly. Other species tend to sell out quickly as well, so it's best to get your order in quickly!



A seedling tree order form is available in this newsletter or you may download an order form off our website at [www.sccdwy.org](http://www.sccdwy.org).

# Watershed Education

Sagebrush Outdoor Lab  
Watershed Demonstration

## AG Expo Water Cycle Wall



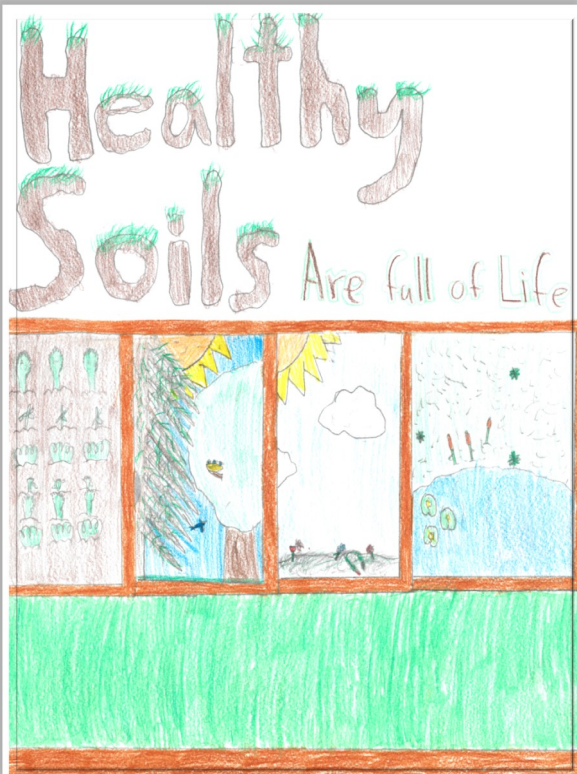
Third Thursday Stormdrain Plinko Board



## Congratulations John P. Lansing!

John won 1st place in the 4th-6th grade division for the 2017 Soil and Water Stewardship Week Poster Contest.

He'll receive a \$15 gift certificate to Sheridan Stationery and will be entered into the state contest for a chance to win a \$100 cash prize!



## WATERSHEDS OUR WATER, © OUR HOME



### Soil and Water Stewardship Week Poster Contest

"Watersheds—Our Water, Our Home" is the theme for the 2018 Soil and Health Stewardship Week Poster Contest. Participants K-12 have the chance to win a \$15 gift card to Sheridan Stationery and will be entered into the state contest for a chance to win \$100 cash. If the participant wins at the state level, their poster will move onto the national level, where they have the chance to win \$200 (1st place), \$150 (2nd place), or \$100 (3rd place) prizes.

Deadline for poster submission is **May 31st, 2018**. Posters will be judged over the summer and winning entries will be submitted to the state competition in October.

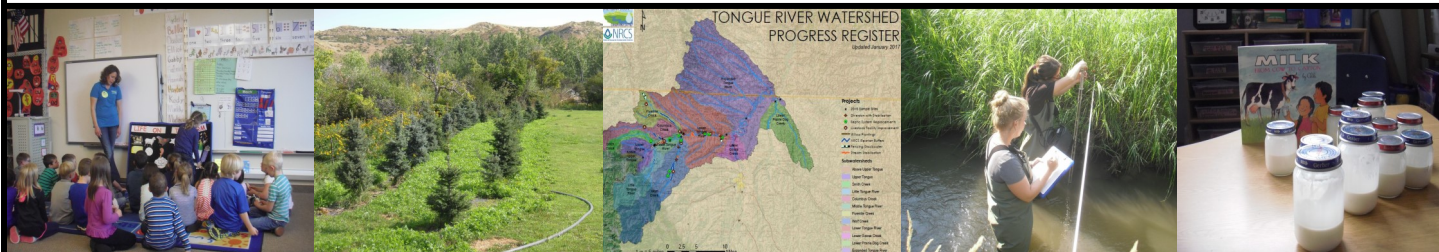
If you have children or students that would like to enter the poster contest, K-12, please contact our office or visit our website for more information!



Sheridan County Conservation District  
1949 Sugarland Drive, Suite 102  
Sheridan, Wyoming 82801  
307-672-5820  
[www.sccdwy.org](http://www.sccdwy.org)  
[www.facebook.com/sccdwy.org](https://www.facebook.com/sccdwy.org)

Non-Profit Org.  
U.S. Postage Paid  
Sheridan, WY  
Permit No. 21

# Looking Ahead



**Regenerating Landscapes Soil Health Workshop — November 10, 2017**

**2018 USDA Environmental Quality Incentives Program (EQIP) and Regional Conservation Partnership Program (RCPP) Sign-Up Deadline — November 17, 2017**

**Tree Program — November 2017**

**Watershed Newsletters — January 2018**

**Watershed Steering Committee Meetings (Tongue River, Goose Creek, Prairie Dog Creek) — February 2018**

**AG Week — March 2018**

**Goose Creek Water Quality Sampling Begins — May 2018**



*“The conservation of natural resources and their proper use constitute the fundamental problem which underlies almost every other problem of the national life. . .”*

*– Theodore Roosevelt*



## *2018 Contribution Campaign*

*The mission of the Sheridan County Conservation District is to protect Sheridan County's water and land quality through assistance programs, education, monitoring, and planning.*

### Sheridan County Conservation District Contribution Commitment

**YES! I want to help SCCD protect water and land quality in Sheridan County through assistance programs, education, monitoring and planning.**

Name: \_\_\_\_\_  
Address: \_\_\_\_\_  
City: \_\_\_\_\_ State: \_\_\_\_\_ Zip: \_\_\_\_\_  
Phone: \_\_\_\_\_ E-mail: \_\_\_\_\_

Amount:  
☐ \$50  
☐ \$100  
☐ \$150  
☐ \$500  
☐ \$1000  
☐ Other \$ \_\_\_\_\_

Please put my contribution towards:  
☐ Acme Revitalization Project  
☐ Watershed Programs & monitoring  
☐ Oil Recycling/Trees/Weeds/Range monitoring  
☐ Outreach/Education  
☐ Anywhere it is needed

Please Mail Your Contribution To:

Sheridan County Conservation District  
1949 Sugarland Drive, Suite 102  
Sheridan WY 82801



Sheridan County Conservation District  
1949 Sugarland Drive, Suite 102  
Sheridan, WY 82801  
[www.sccdwy.org](http://www.sccdwy.org)  
[www.facebook.com/sccdwy.org](https://www.facebook.com/sccdwy.org)

## One of Many

The Sheridan County Conservation District (SCCD) is one of thirty-four conservation districts in the state of Wyoming. Each district has a unique program tailored to its natural resource needs. SCCD's mission centers around water and land quality in Sheridan County.

## Special Projects

The SCCD, in partnership with the Sheridan Community Land Trust and The Nature Conservancy, have initiated a project to address environmental and safety concerns at the former Acme Power Plant. As part of this effort, SCCD has assumed ownership of the property for the purpose of participating in federal and state programs. Currently the site is an island of debris within an otherwise open space. Areas around the site support livestock grazing and are frequently used for hunting, fishing, or floating the adjacent Tongue River. Initial environmental assessments are underway. In the coming months, SCCD will be working to secure additional funding for the remediation and re-use planning for the site. Local contributions and private donations will be important for matching outside sources.



The function of the local Conservation District is to take the "available technical, financial, and educational resources, whatever their source, and focus or coordinate them so that they meet the needs of the local land user."  
—Pete Nowak

## Funding

The Sheridan County Conservation District is funded primarily through federal and state grants with some support from local funding sources, including contributions from private citizens. **Funds raised through private contributions are critical to the function of the District.** Local funds serve as match for grants and provide for activities not covered through grants.

Local funding means local accountability.

SCCD plays a key role in the protection of the natural resources in Sheridan County. **Funding received through local sources enables SCCD to maintain its commitment to local resource management.**

## ACHIEVING THE MISSION

### *Something for Everyone*

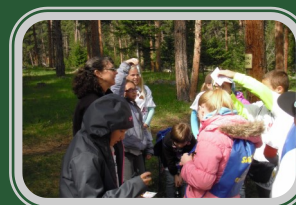
#### Assistance Programs

- ◆ Water Quality Improvement Projects
- ◆ Seedling trees for windbreaks and living snow fences
- ◆ Waste oil recycling facilities in Dayton and Clearmont



#### Education

- ◆ Water Quality demonstrations and hands-on activities
- ◆ Agriculture Week activities on food/product origins
- ◆ Community Events and Workshops



#### Monitoring

- ◆ Water Quality Monitoring
- ◆ WDA Rangeland Health Assessment Projects
- ◆ WWDC Level 1 Watershed Assessments

#### Planning

- ◆ Watershed Planning
- ◆ Land-Use Planning



**"We make a living by what we get, we make a life by what we give." —Winston Churchill**

# Sheridan County Conservation District 2017/2018 Seedling Tree Program Order Form Order # \_\_\_\_\_

This nursery stock must be used for conservation purposes, not in ornamental or landscape plantings.

No plant purchased from the SCCD or their distributors may be resold as a living plant.

Payment must accompany order. **Refunds will not be given for cancelled orders after 2/1/2018.**

If trees ordered are not available, a refund will be issued, unless a substitution is requested.

I have read and agree with the above "Conditions of Sale." \_\_\_\_\_

Name: \_\_\_\_\_

Daytime Phone: \_\_\_\_\_

Mailing Address: \_\_\_\_\_

Evening Phone: \_\_\_\_\_

City/State/Zip: \_\_\_\_\_

(E-mails will be used for contact purposes when trees come in.)

## TYPES OF PLANTINGS

(Circle all that apply):

Windbreaks/Living Snow Fences;

Wildlife Habitat;

Erosion Control; Reforestation;

Visual Screen/Noise Barrier;

Other \_\_\_\_\_

**Check if you want to receive our newsletter:**

☐ Via e-mail

☐ Hardcopy

☐ No Thanks

PART A: Bare Root - Sold in lots of 25 trees only End height varies by tree, but all bare root trees will be 5 inches or taller.			
Species	Price/25	Qty	Subtotal
<b>Deciduous Shrubs</b>			
CSU001 - Caragana	\$32.00		
CSU005 - Lilac	\$32.00		
CSU006 - Native Plum	\$32.00		
CSU009 - Nanking Cherry	\$32.00		
CSU011 - Wild Rose (Woods rose)	\$32.00		
CSU012 - Buffaloberry	\$32.00		
CSU019 - Wax Currant	\$32.00		
CSU017 - Red-Osier Dogwood	\$32.00		
<b>Deciduous Trees</b>			
CSU004 - Chokecherry	\$32.00		
CSU022 - Hybrid Cottonwood	\$32.00		
CSU025 - Hackberry	\$32.00		
CSU035 - Prairie Sky Poplar	\$32.00		
CSU037 - Honeylocust	\$32.00		
CSU040 - Manchurian Apricot	\$32.00		
LO2 - Silver Maple	\$32.00		
LO3 - Golden Willow	\$32.00		
LO4 - Black Walnut	\$32.00		
LO5 - Bur Oak	\$32.00		
<b>Coniferous Trees</b>			
CSU106 - Eastern Red Cedar	\$32.00		
CSU110 - Rocky Mtn. Juniper	\$32.00		
<b>PART A : Bare Root Trees Total</b>			
<b>PART B: Bare Root Variety Package-</b> Sold in lots of 25 trees only (5 of each species) Chokecherry, Buffaloberry, Red-Osier Dogwood, Native Plum, Rocky Mtn. Juniper			
Species	Price/25	Qty	Subtotal
CSU000: Variety Package	\$35.00		
<b>PART B: Variety Package Total</b>			

PART C: Large Tube Trees- Sold in lots of 30 trees only End height varies by tree, but all large tube trees will be 6 inches or taller.			
Species	Price/30	Qty	Subtotal
<b>Deciduous Shrubs</b>			
CSU216 - Buffaloberry	\$80.00		
CSU232 - Coyote Willow	\$80.00		
CSU237 - Sumac	\$80.00		
CSU249 - Red-Osier Dogwood	\$80.00		
<b>Deciduous Trees</b>			
CSU201GU - Aspen	\$80.00		
<b>Coniferous Trees</b>			
CSU202 - Colorado Blue Spruce	\$80.00		
CSU203 - Douglas Fir	\$80.00		
CSU204 - Engelmann Spruce	\$80.00		
CSU205RO - Ponderosa Pine	\$80.00		
CSU209 - Scotch Pine	\$80.00		
CSU214 - Limber Pine	\$80.00		
<b>PART C - Large Tube Trees Total:</b>			
<b>PART D: Supplies/Services</b>			
Supplies	Price	Qty	Total
6'x300' roll	\$110.00		
Plastic Mesh Rabbit Guard Tree Cage 36" ht	\$1.25		
<b>PART D - Supplies/Services Total</b>			
<b>TOTAL CALCULATIONS</b>			<b>Qty</b>
PART A - Bareroot Trees			\$
PART B - Variety Package			\$
PART C - Large Tube Trees			\$
PART D - Supplies/Services			\$
Subtotal:			\$
<b>SALES TAX (SUBTOTAL X 0.06)</b>			\$
<b>Total Amount Due:</b>			\$

**ORDER DEADLINE: 4/6/2018**

To ensure availability, please order early and enclose payment with order.

**RETURN ORDER AND MAKE CHECKS PAYABLE TO:**

## Species Descriptions

Although the species listed have proven adaptable to Wyoming conditions, each species may have limited adaptability to local soil types and conditions. Please go to [www.plants.usda.gov](http://www.plants.usda.gov) for more information on species and planting guides.

### Deciduous Shrubs

**BUFFALOBERRY:** Medium to tall shrub; drought resistant and tolerant of alkaline soils; excellent cold hardiness; good wildlife cover and food value.

**CARAGANA:** Medium to tall shrub; excellent drought resistance and cold hardiness; tolerant of salt and alkaline soils; good wildlife species.

**COYOTE WILLOW:** Medium to tall shrub; fast growing; good for riparian areas; good wildlife species for cover and browse.

**LILAC:** Tall; one of the better shrubs for windbreak purposes; fast growing; very good drought resistance; excellent cold hardiness.

**NANKING CHERRY:** Medium size; rapid growth; excellent cold hardiness; drought resistant; edible fruit relished by wildlife.

**NATIVE PLUM:** Tall shrub or short tree; good alkaline tolerance; excellent wildlife value; cold hardy; edible fruit.

**RED-OSIER DOGWOOD:** Small to medium sized; suitable for riparian areas; tolerant of cold; not suited for heavy clay soils; red fall foliage..

**SERVICE BERRY:** Medium shrub; moderate growth rate; likes moist soils; excellent cold hardiness; excellent wildlife value; edible fruit.

**SUMAC:** Medium shrub; excellent alkaline tolerance; excellent drought resistance; very cold hardy; red-orange fall foliage.

**WAX CURRANT:** Small shrub; drought resistant; cold hardy; rapid growth; coarse and medium soils; high wildlife value; edible fruit.

**WOODS ROSE (Wild Rose):** Small shrub; high wildlife value; grows well on moist soil; cold hardy.

### Deciduous Trees

**ASPEN:** Medium to tall tree; rapid growth; poor drought resistance; hardy in cold temperatures; plant up to 11,000 feet.

**BLACK WALNUT:** Fast growing; requires deep, well-drained, neutral soil; popular hardwood tree; good shade tree; produces flavorful, thick-shelled nuts.

**BUR OAK:** Medium to tall tree; cold hardy and drought resistant; tolerates alkaline soil well; slow growing, but very long lifespan; acorns have excellent food value for wildlife.

**CHOKECHERRY:** Small to medium tree; rapid growth; good alkaline tolerance; preferred by a variety of wildlife species; edible fruit.

### Deciduous Trees (Continued)

**GOLDEN WILLOW:** Medium tree; useful in riparian areas; does well in moist sites and can survive flooding; tolerates salt and alkaline soils.

**HACKBERRY:** Related to Elm; similar, but superior. Deep rooted; withstands heat, wind, drought and alkaline soils.

**HONEYLOCUST:** Medium to tall; rapid growth; very good drought resistance and cold hardiness.

**HYBRID COTTONWOOD:** Medium to tall; rapid growth; excellent cold hardiness; low drought resistance.

**MANCHURIAN APRICOT:** Small; fast-growing; moderately drought tolerant; does not tolerate wet soils; useful in windbreaks.

**PRAIRIE SKY POPLAR:** Medium to tall; rapid growth; low drought resistance; excellent cold hardiness.

**SILVER MAPLE:** Medium to tall; rapid growth; moderately drought and flood tolerant; prefers deep, moist, acidic soil.

### Coniferous Trees

**COLORADO BLUE SPRUCE:** Tall; best on moist soils but will grow on drier sites if watered for establishment; excellent cold hardiness.

**DOUGLAS FIR:** Tall; good drought resistance; excellent cold hardiness; on east and north slopes above 6,000 feet.

**EASTERN RED CEDAR:** Medium; on most soils in the plains below 6,000 feet; drought resistant when established; good windbreak species.

**ENGLEMANN SPRUCE:** Tall tree; very good drought resistance; excellent cold hardiness; requires shade; plant only above 8,000 feet.

**LIMBER PINE:** Medium tall; drought tolerant native; very strong against wind; to 11,000' elevation.

**PONDEROSA PINE:** Tall; needs well-drained soils; tolerates alkaline soil; excellent drought resistance and cold hardiness; high wildlife value; one of the better windbreak trees.

**ROCKY MT. JUNIPER:** Medium tree; excellent alkaline tolerance; drought resistant when established; cold hardy; excellent windbreak species.

**SCOTCH PINE:** Tall; tolerates alkaline soil; not advisable for windbreaks because of brittleness; good Christmas tree.

## Plan Before You Plant

A planting plan should be prepared before trees are ordered or planted. The planting plan will show the proper location for the planting, the best species for your site, spacing between rows, spacing between trees in the row, and the correct number of trees and shrubs needed. Requirements for proper planting to gain initial survival and how to keep trees in a vigorous growing condition should also be considered.

For planning assistance contact the Conservation District, Natural Resources Conservation Service District Conservationist, or the publication entitled "The Farmstead Windbreak" which provides helpful information on tree planting and maintenance care.